

## DF 1000/2000 (Canaan, CT) dolomitic limestone

DF dolomitic limestone products are produced at our Canaan, CT plant, from a large deposit of high quality, high brightness, marbled dolomite (calcium-magnesium carbonate). These products are produced in a series of different grain sizes. The product code numbers permit easy identification of product characteristics. The first two digits in the code number indicate the approximate top mesh size. The last two digits indicate the approximate percent passing a 200 mesh sieve.

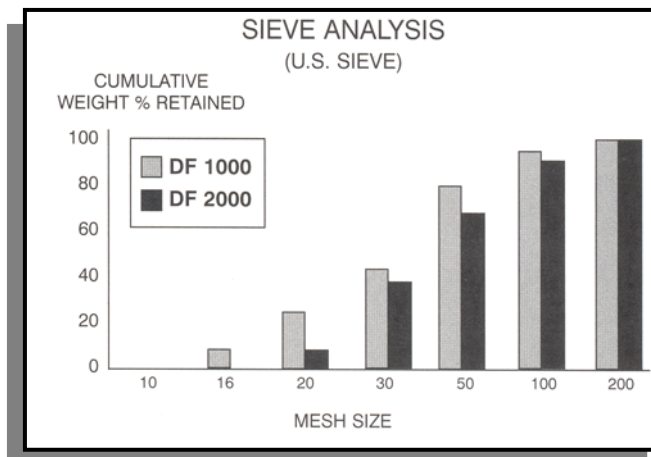
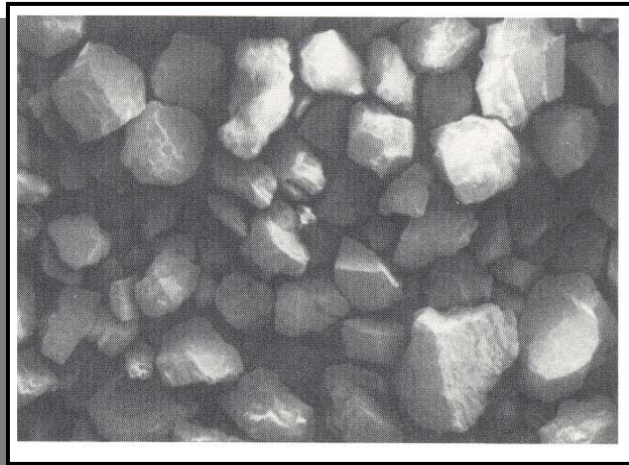
Specialty Minerals Inc. dolomitic limestone products are used in a wide variety of industrial and agricultural applications, such as fillers in stucco aggregates and grout, floor tile, soil treatment, acid neutralization and in swimming pool plaster.

### Typical Properties

|  | DF 1000 | DF 2000 |
|--|---------|---------|
| Specific Gravity                       | 2.8     | 2.8     |
| Bulk Density (pounds/ft <sup>3</sup> ) | 110     | 105     |
| (grams/cc)                             | 1.76    | 1.68    |

### Chemical Composition (typical)

|                                      |                                |       |
|--------------------------------------|--------------------------------|-------|
| Calcium Carbonate                    | CaCO <sub>3</sub>              | 55.0% |
| Magnesium Carbonate                  | MgCO <sub>3</sub>              | 43.0% |
| Iron as                              | Fe <sub>2</sub> O <sub>3</sub> | 0.3%  |
| Moisture<br>(% weight loss @ 110° C) | H <sub>2</sub> O               | 0.1%  |



All products are sold on the understanding that the user is solely responsible for determining their suitability for the intended use. All information given and recommendations made herein are based upon our research and are believed to be accurate, but no guarantee, either expressed or implied, is made with respect thereto or with respect to the infringement of any patent. SMI MAKES NO WARRANTY OF MERCHANTABILITY OR SUITABILITY FOR ANY PARTICULAR PURPOSE IN CONNECTION WITH ANY SALE OF THE PRODUCTS DESCRIBED HEREIN. Inconsistent terms and conditions contained in Buyer's purchase order shall not be binding on SMI/BMI unless reflected in writing signed by SMI/BMI's representative. This information is not to be copied, used in evidence, released for publication or public distribution without written permission from Specialty Minerals Inc./Barretts Minerals Inc.

### Sales Offices

Bethlehem, PA • 800-801-1031  
Adams, MA • 800-225-1156  
www.mineralstech.com

